



TOMOTA



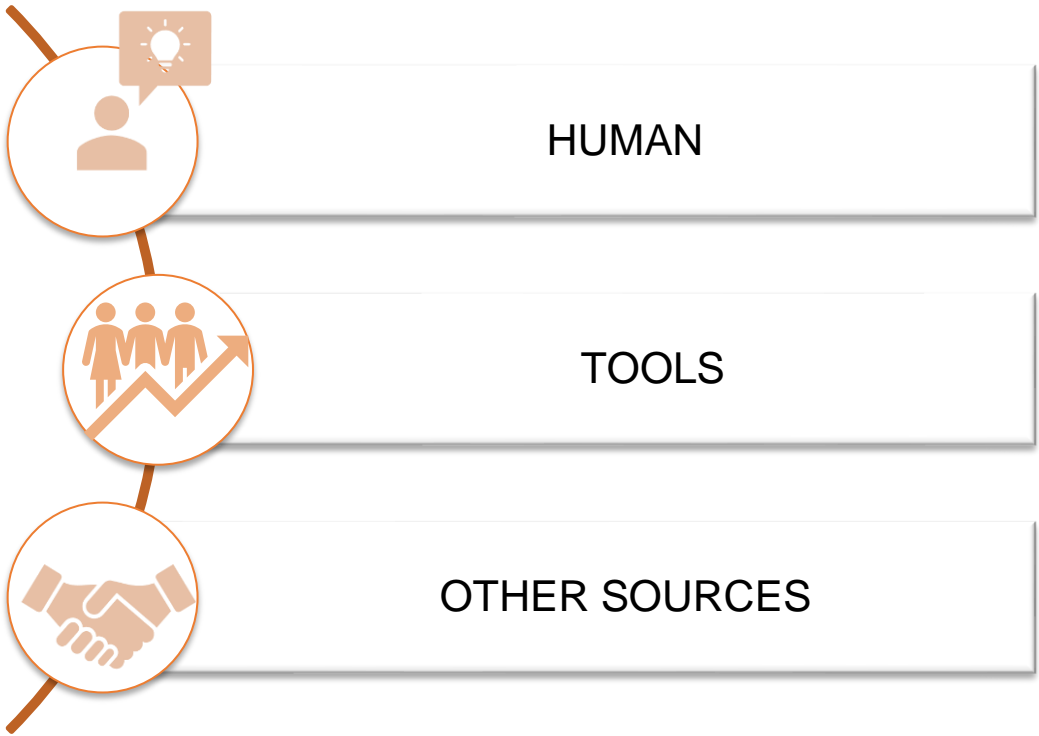
Tôm + OTA
朋 (Japanese)
Friend
Bằng hữu



Data-driven shrimp farming



Key Data Factors Effectuated to Shrimp Farm



TOOLS

Issues:

- **Measuring and counting PLs at the beginning of the farming season is unclear, leading to unmanaged stocking density.**
- **Inaccurate and frequent environmental measurements lead to failure to control water quality.**
- **Feed management with shrimp growth rate is not optimal**
- **Disease information management.**

Solutions:

- **TOMOTA S3T**
- **TOMOTA A3**
- **Auto-Feeder with loadcell and TOMOTA S3**
- **TOMOTA App checks daily disease information from its user network**

The tool is simple, effective, easy to use and the price is very suitable for the majority of farmers.



OTHERS SOURCES

Issues:

- Information on weather and climate developments and climate change.
- Information on market price like input materials.
- Shrimp price on domestic and international markets.
- Information is not clear enough to trace the origin.

Solutions:

- Data-based sharing cooperation model to easily negotiate input prices, output products as well as certificates for traceability such as ASC, BAP..



BENEFIT FROM DATA

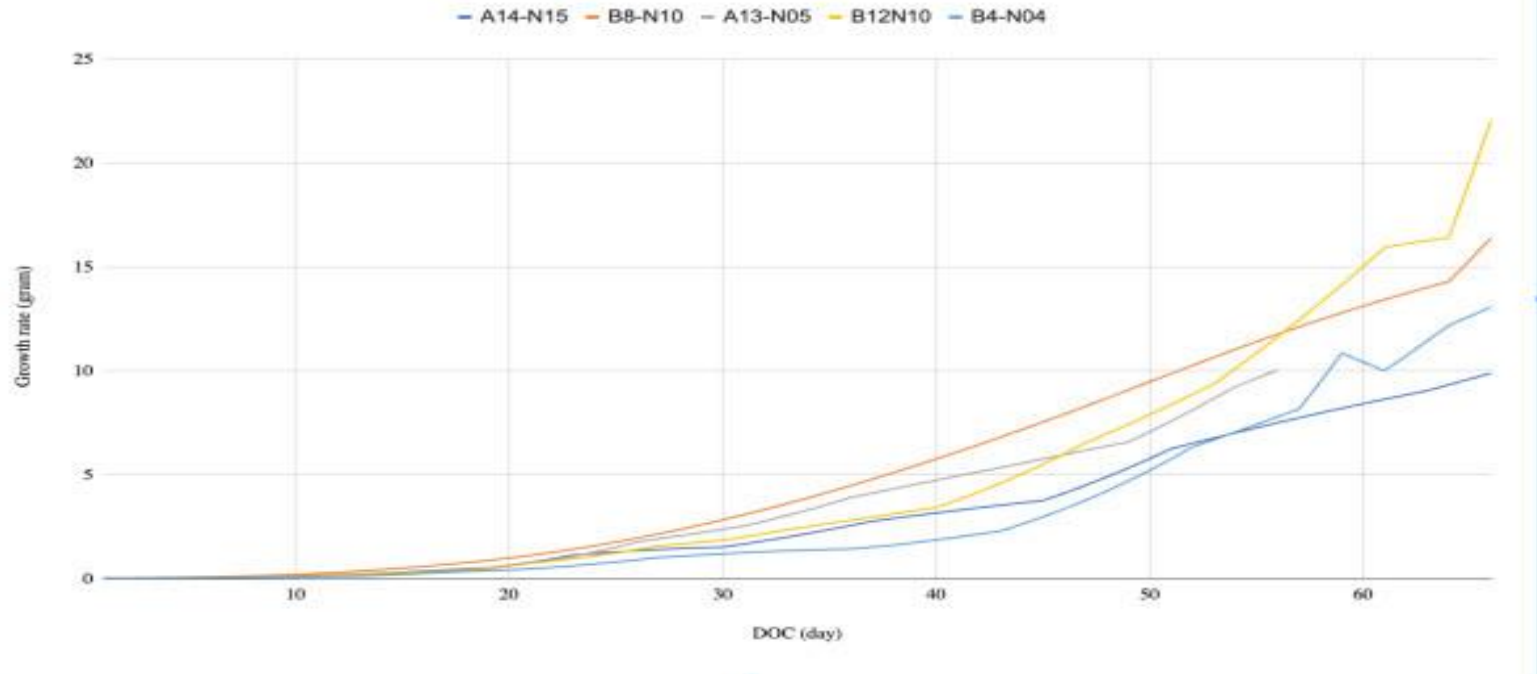
Values brought from DATA:

- Better understand the causes of failure/success of the shrimp crop from the data.
- Understand the quality and prices from suppliers such as feed, hatcheries, and aquatic medicine
- Harvesting at the right time has the best value.
- Traceability of origin.
- Easy access to credit and insurance institutions based on accurate crop information



Growth Rate with Low Density

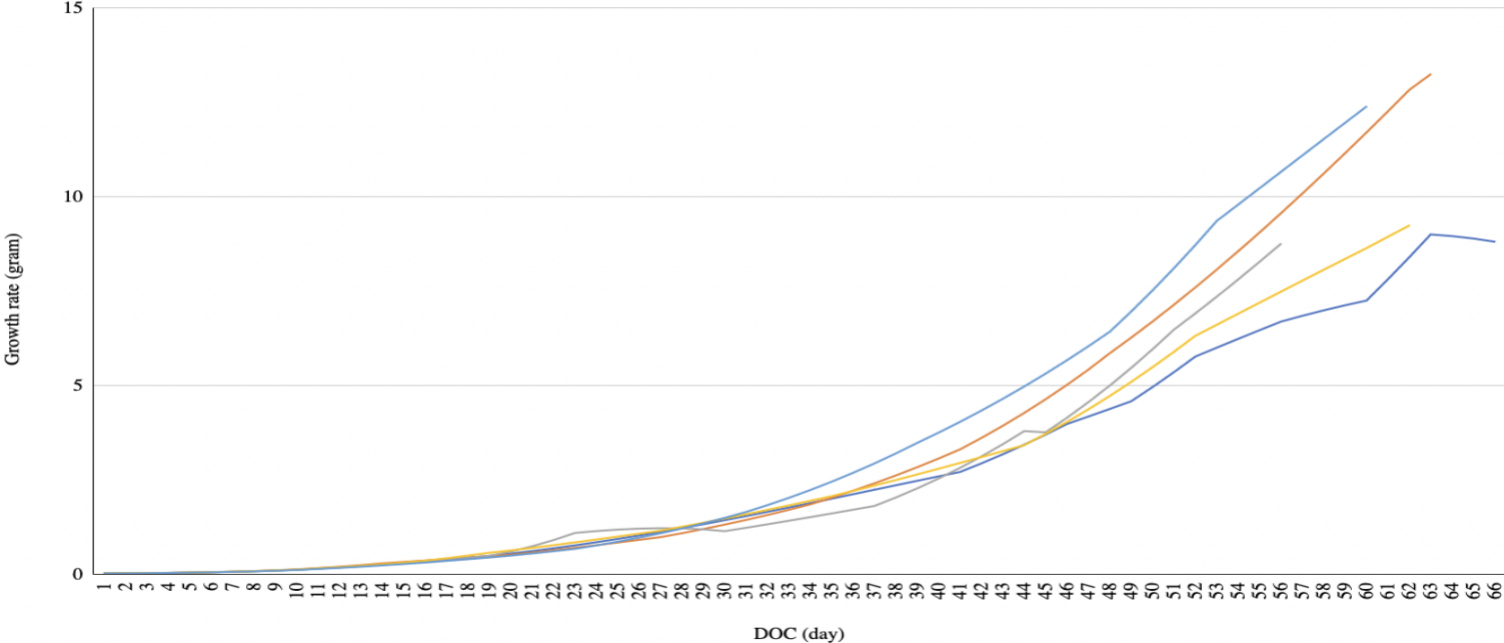
Density: 87-89 pcs/m²



Growth Rate with High Density

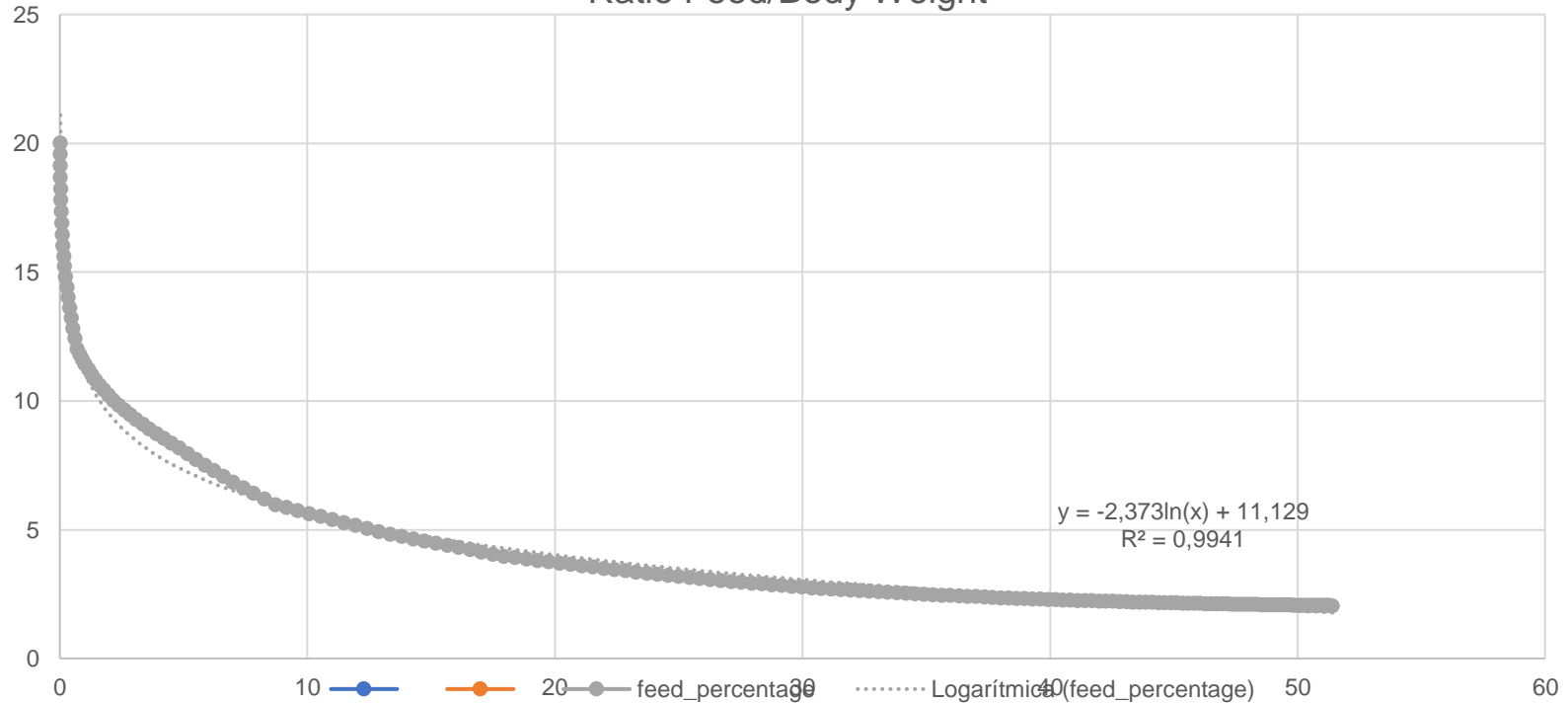
Density: 120-150 pcs/m²

— A1N04 — A11N17 — A14N29 — A15N02 — B1N10



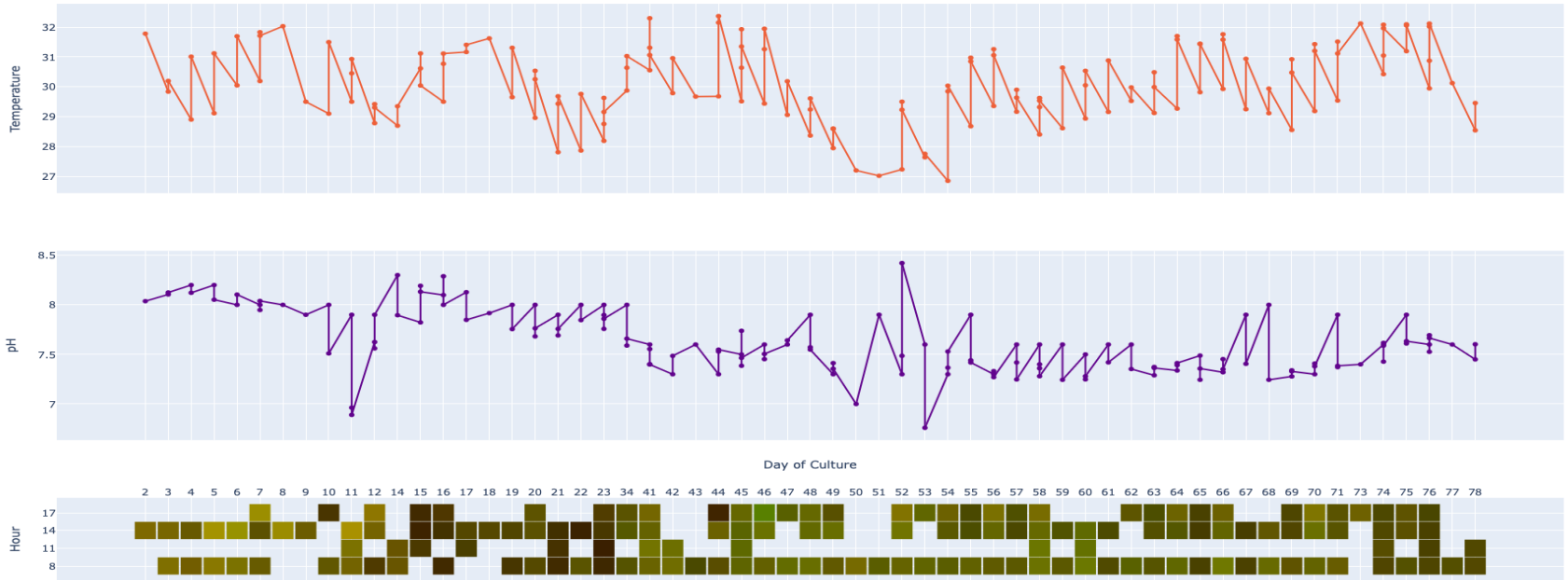
Feed Program by SIZE and % Percentage Body Weight.

Ratio Feed/Body Weight



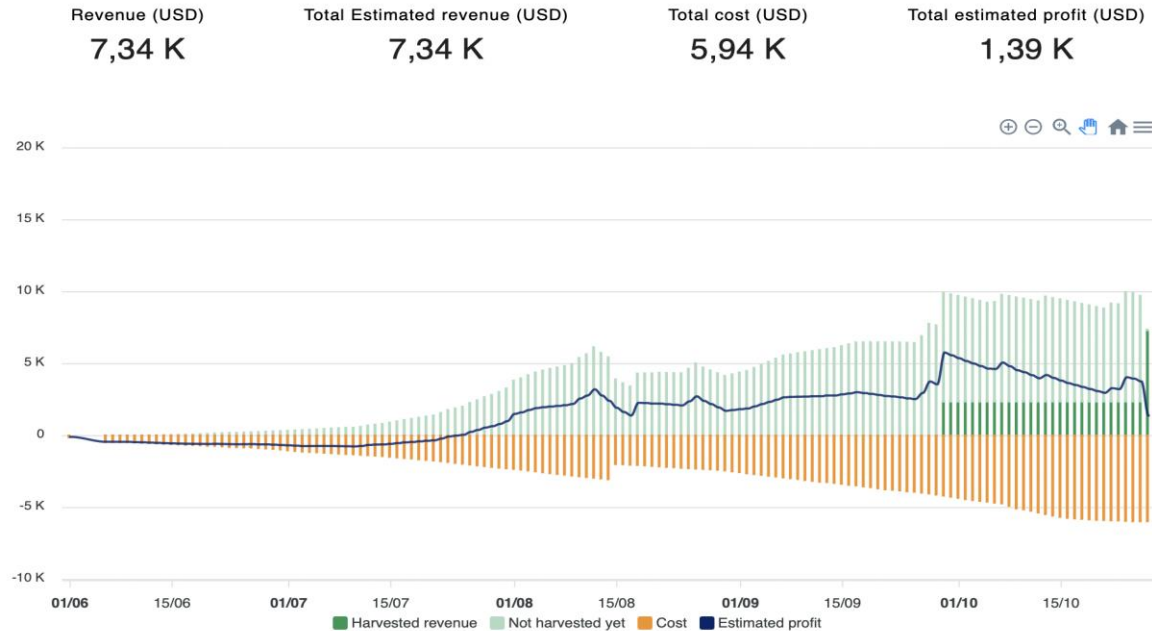
Water Color, pH and Weather Station.

Water color - pH, Temperature



Golden Time to Harvest:

PROFIT CHART



Material Reports

Home > List of inventory reports

List of inventory reports


Used supplies Inventory report Arrival/Shipment report

Farm: Minh Phú Lộc An Module: A2 Pond: Pond A2N2

Category Group: Aquaculture Supply category: 07/11/2023 - 14/11/2023

COST OF SUPPLIES USE USD

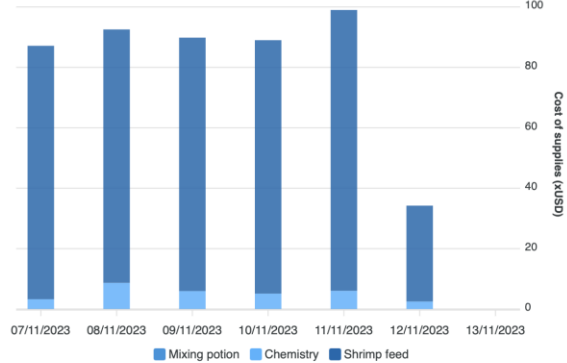
Total cost (USD)
564,81



Category	Cost (USD)
Shrimp feed	526,05
Chemistry	38,26
Mixing potion	0,49

[See details >](#)

SUPPLIES USE OVER TIME



Date	Mixing potion (USD)	Chemistry (USD)	Shrimp feed (USD)
07/11/2023	~2	~2	~90
08/11/2023	~2	~2	~100
09/11/2023	~2	~2	~95
10/11/2023	~2	~2	~95
11/11/2023	~2	~2	~110
12/11/2023	~2	~2	~35
13/11/2023	~2	~2	~0

Everyday [See details >](#)




Traceability with ASC, BAP Certificate.

Age	Day of culture	Feed type	ID code	Feed quantity						Total feed quantity	Depth	Alkalinity	pH		Pond temperature	
				First time	Second time	Third time	Fourth time	Fifth time	Sixth time				Morning	Afternoon	Morning	Afternoon
44	19/07/2023	Super Shield No2ML(1,7kg); Super Shield EHP No2ML(14kg); Super Shield EHP No2ML(6,1kg); Gro-Mei Eco No.2M(3,5kg);		5	5	5	5	5		25	115	139	8	8	28	26
45	20/07/2023	Gro-Mei Eco No.2M(14kg); Super Shield EHP No2ML(8,75kg); Gro-Mei Eco No.2ML(2,75kg);		5	5	5	5	5,5		25,5			8	8	28	26
46	21/07/2023	Gro-Mei Eco No.2ML(11kg); Super Shield EHP No2ML(16,7kg);		5,5	5,5	5,5	5,5	5,7		27,7			8,1	8,2	28	26
47	22/07/2023	Super Shield EHP No2ML(27kg); Super Shield EHP No2L(1,8kg);		5,7	5,7	5,7	5,7	6		28,8			8,3	8,3	28	26
48	23/07/2023	Super Shield EHP No2ML(23kg); Super Shield EHP No2L(13,4kg);		6	6	6	6	6,2	6,2	36,4			8	8	28	26
49	24/07/2023	Super Shield EHP No2ML(12,4kg); Super Shield EHP No2L(12,4kg);		6,2	6,2	6,19	6,2			24,79			8,1		28	
50	25/07/2023	Super Shield EHP No2ML(14,35kg); Super Shield EHP No2L(16,95kg);		6,2	6,2	6,2	6,2	6,5		31,3	100	136	8,1	8	28	26
51	26/07/2023	Super Shield EHP No2ML(17,09kg); Super Shield EHP No2L(10,3kg); Super Shield No2ML(0,36kg); Gro-Mei Eco No.2L(5,65kg);		6,5	6,5	6,5	6,5	7,4		33,4			8,2	8,2	28	
52	27/07/2023	Gro-Mei Eco No.2L(20,42kg); Super Shield EHP No2L(16,67kg);		7,4	7,4	7,4	7,4	7,5		37,1			8,2	8	28	26
53	28/07/2023	Gro-Mei Eco No.2L(22,5kg); Super Shield EHP No2L(15,2kg);		7,5	7,5	7,5	7,5	7,7		37,7			8	8,1	28	26

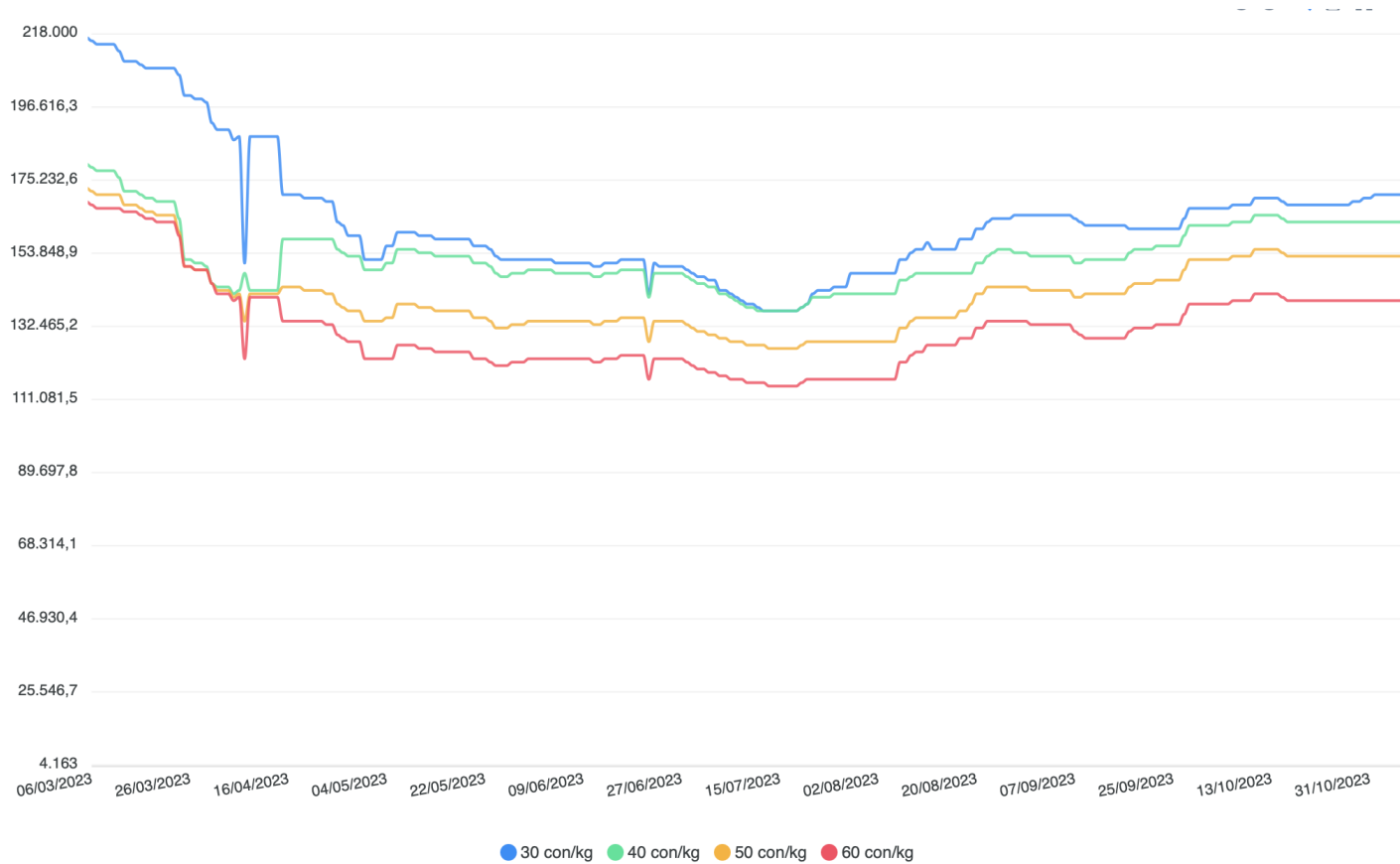


Pond Ranking.

POND RANKING

		Pond	Module	Zone	Farm	Harvested (kg)	Not harvested (kg)	Total value (USD)	Cost (USD)	GP (USD)	GP Ratio (%)	Age (days)	Survival rate (%)	FCR	Size (units of shrimp/kg)
1		Pond A1N04	A1	Khu A	Minh Phú Lộc An	9.851	0	48.612,34	13.110,19	35.502,15	0,73	72	94,05	0,95	47,01
2		Pond A1N01	A1	Khu A	Minh Phú Lộc An	10.655	0	42.238,46	13.707,03	28.531,43	0,68	72	107,4	0,96	46,02
3		Pond A1N05	A1	Khu A	Minh Phú Lộc An	7.830	0	39.262,13	10.791,52	28.470,61	0,73	72	80,78	1,05	55,01
4		Pond A1N03	A1	Khu A	Minh Phú Lộc An	8.160	0	39.737,07	11.779,84	27.957,24	0,7	72	96,37	1,11	60,02
5		Pond A1N11	A1	Khu A	Minh Phú Lộc An	6.730	0	33.416,35	9.525,12	23.891,23	0,71	72	76,01	1,08	60,24
6		Pond A1N06	A1	Khu A	Minh Phú Lộc An	7.045	0	35.261,45	14.076,26	21.185,2	0,6	72	74,38	1,47	55,01
7		Pond A1N13	A1	Khu A	Minh Phú Lộc An	7.075	0	35.048,59	13.883,45	21.165,14	0,6	72	89,47	1,45	68,03
8		Pond A1N02	A1	Khu A	Minh Phú Lộc An	7.670	0	38.014,77	19.115,75	18.899,03	0,5	72	72,24	1,45	50
9		Pond A1N09	A1	Khu A	Minh Phú Lộc An	6.570	0	30.955,37	13.297,31	17.658,05	0,57	72	84,89	1,47	70,03

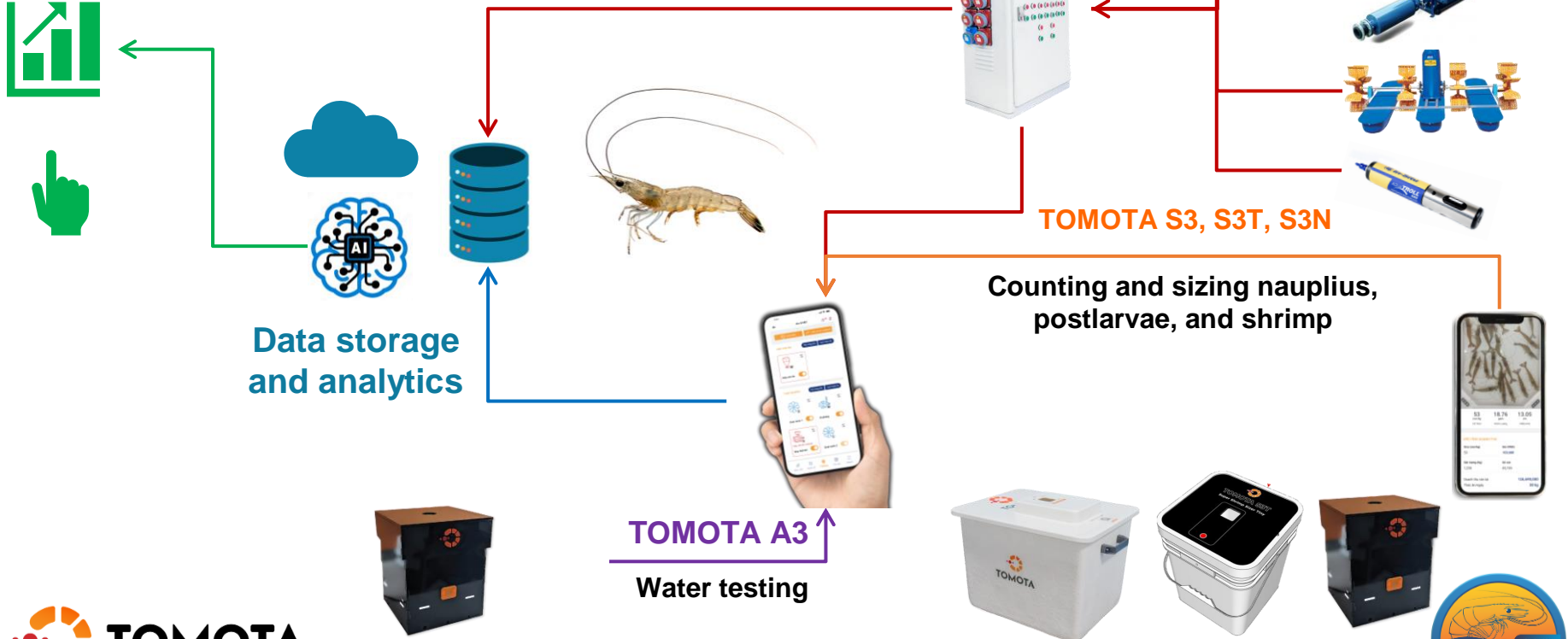




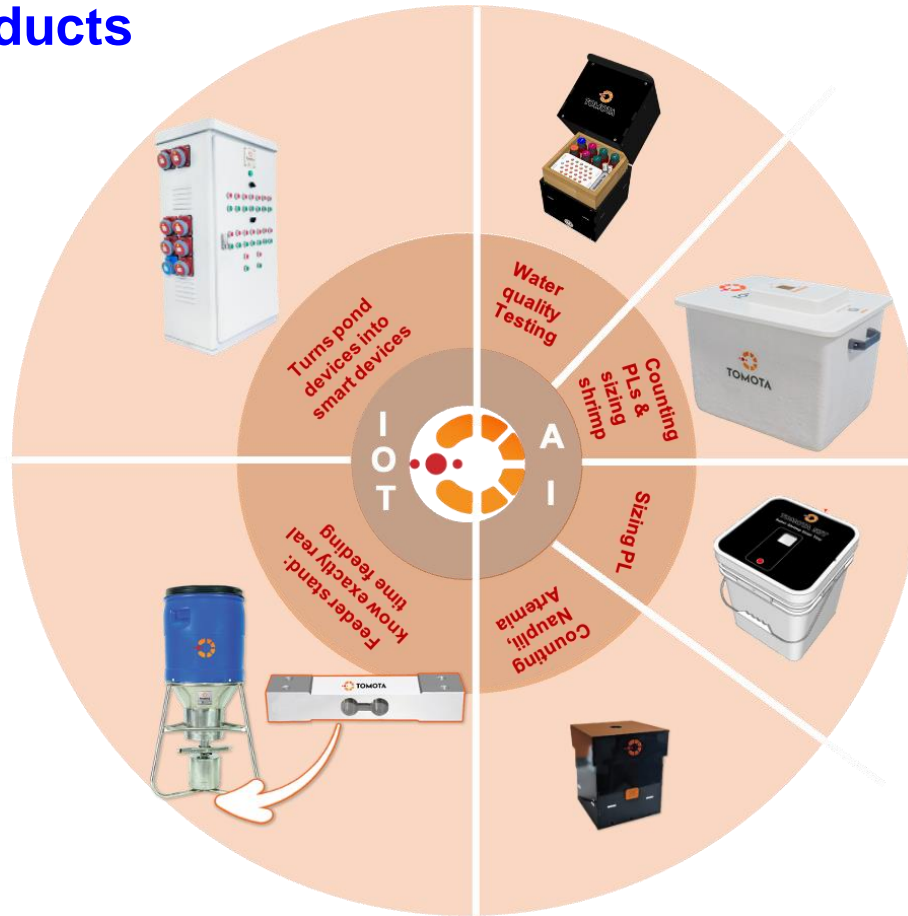
● 30 con/kg ● 40 con/kg ● 50 con/kg ● 60 con/kg



TOTAL SOLUTIONS



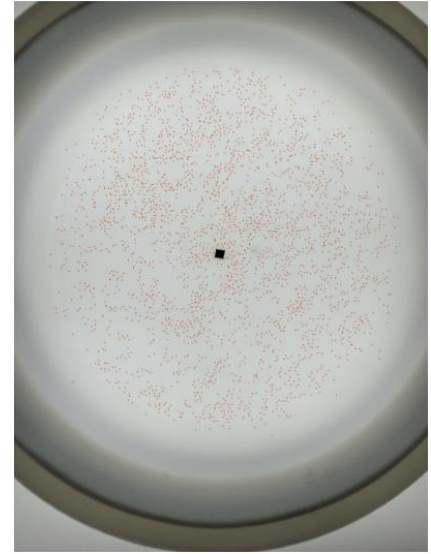
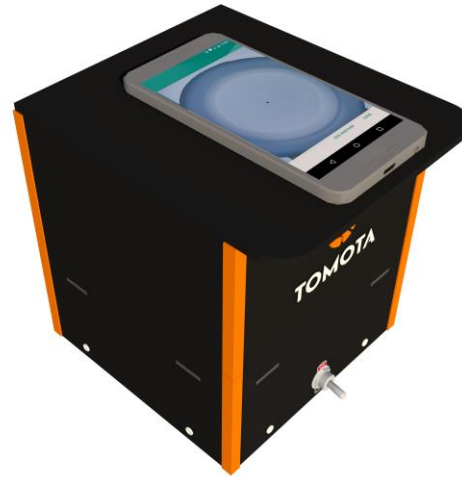
TOMOTA Products



PL quality management with S3N

Counting up to 6,000pcs per measurement:

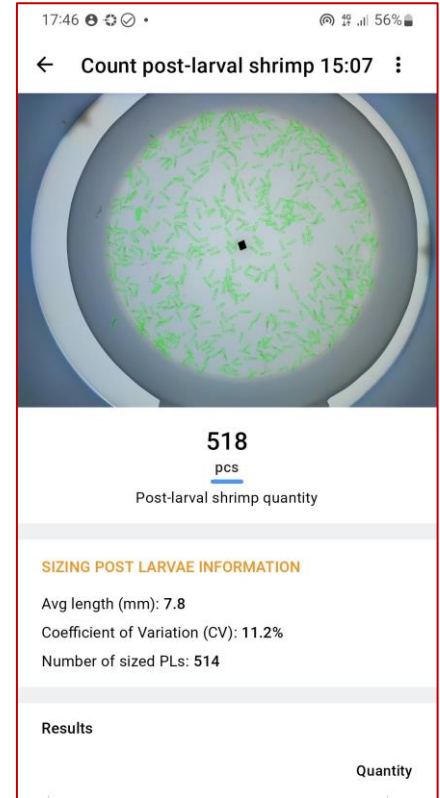
- ❑ Shrimp Nauplii
- ❑ Artemia cyst, Artemia nauplii



PL quality management with S3T

Sizing post-larvae:

- ❑ Up to 700 pcs per measurement
- ❑ From PL's length 6mm
- ❑ Average length, CV, histogram.



PL quality management with S3T

TRADITIONAL

- 20 minutes to measure 20 pcs
- Accuracy is not high



TOMOTA S3T

- 10 seconds to measure 700 pcs
- Accuracy is from 95%



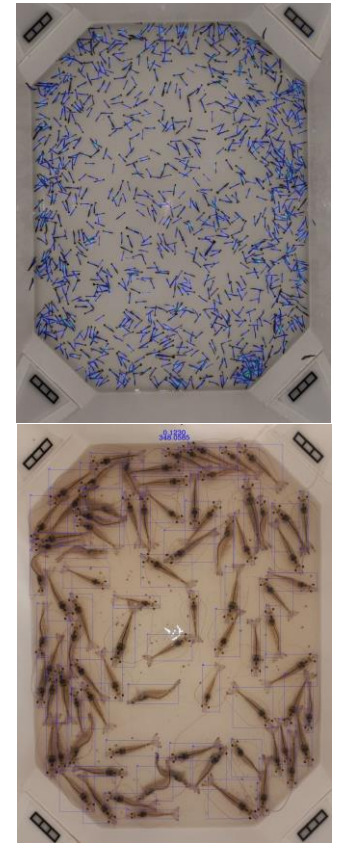
Growth management with Tomota S3

Counting post-larvae:

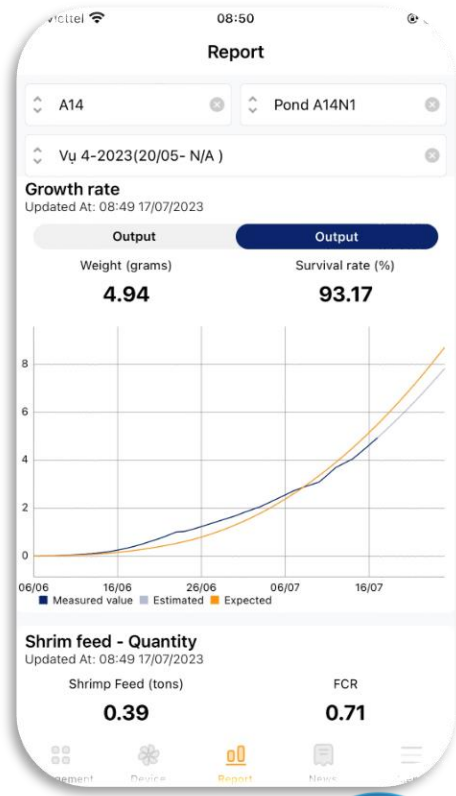
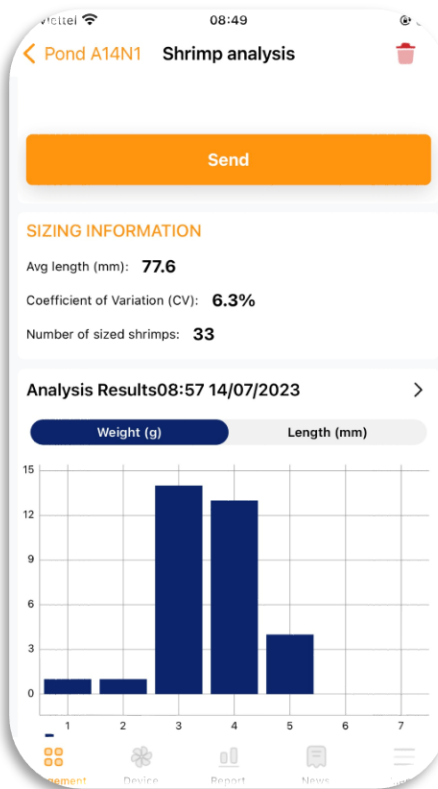
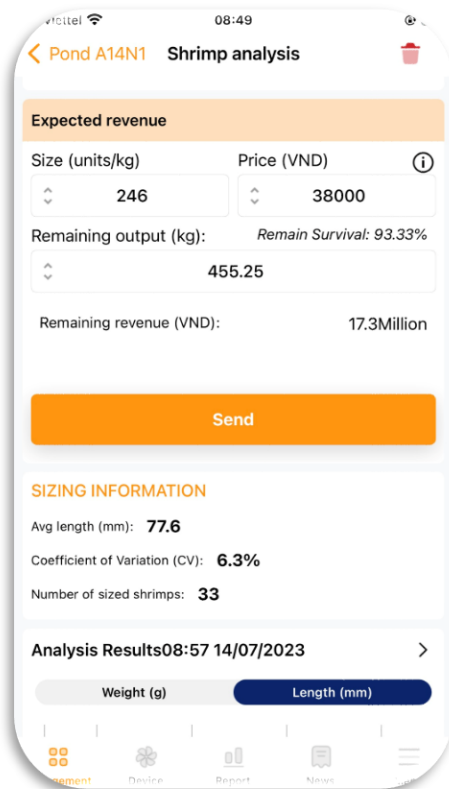
- ❑ Vannamei, Macrobrachium: upto 4,000 pcs per measurement
- ❑ Monodon: upto 3,000 pcs per measurement, average length, CV, histogram.

Sizing shrimp:

- ❑ Vannamei and Monodon: average length, weight, CV, histogram.



Growth management with Tomota S3



Water management with Tomota A3



- ❑ Measure 4 key water parameters PH, Alkalinity, TAN, NO2 for 3 ponds in less than 10 minutes with your smartphone
- ❑ Data-driven decision on water management
- ❑ Fast, accurate and easy to use.

Patent Pending



Water management with Tomota A3

OTHER TEST KITS

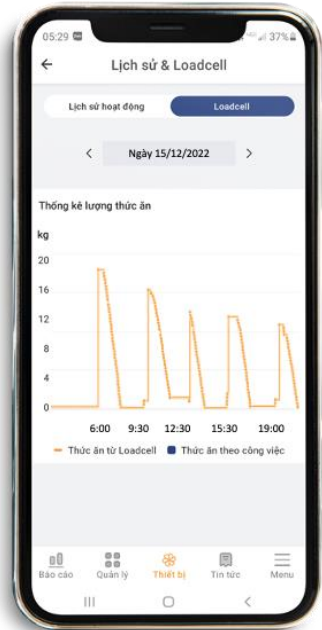
- Check color pannel by eyes
- 9 ponds in 30 minutes

TOMOTA A3

- Results by AI
- 30 ponds in 30 minutes



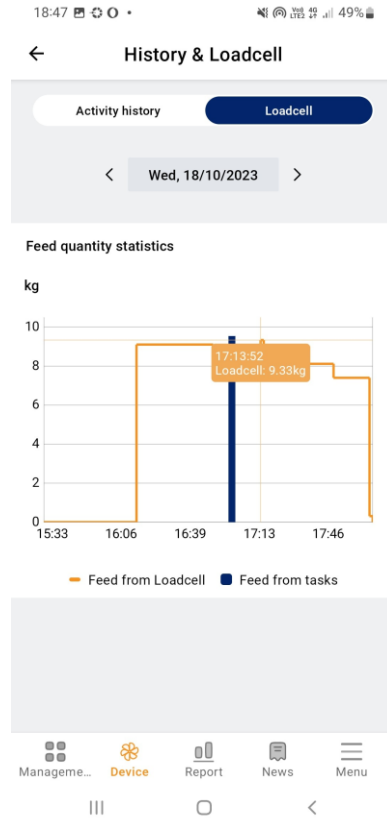
Feeding management with TOMOTA Feeder stand



- Record the feeding activities correctly
- Feeding program
- Reduce waste and water pollution



Feeding management with TOMOTA Feeder stand



- Real-time feed intake control
- Alarm when feed is stuck, cannot be released even though the fan is still spinning (*the traditional feeder can not be able to do this*).
- Control the amount of feed dispensed for monitoring and analysis. Avoid misrecord amount of feed from worker.
- Just operating when in setting time, reducing energy consumption compared to 24/7 operation in traditional system.



TOMOTA S3 data is helping farmers



Nhật kí đo kích thước tôm

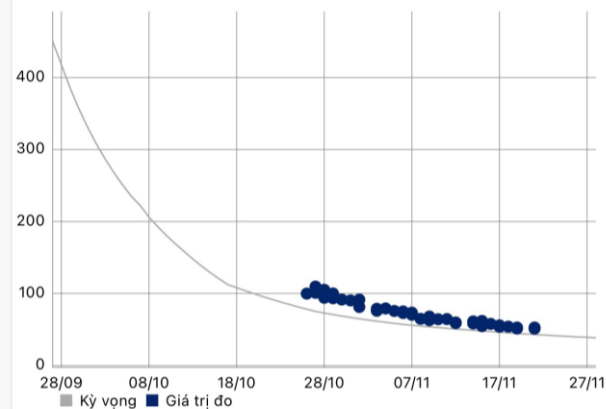
Cỡ tôm trung bình ngày 84.0

51.99

Khối lượng

Chiều dài

Cỡ tôm



TOMOTA is thankful for our partners' supports



MITSUI & CO.



Hatcheries:

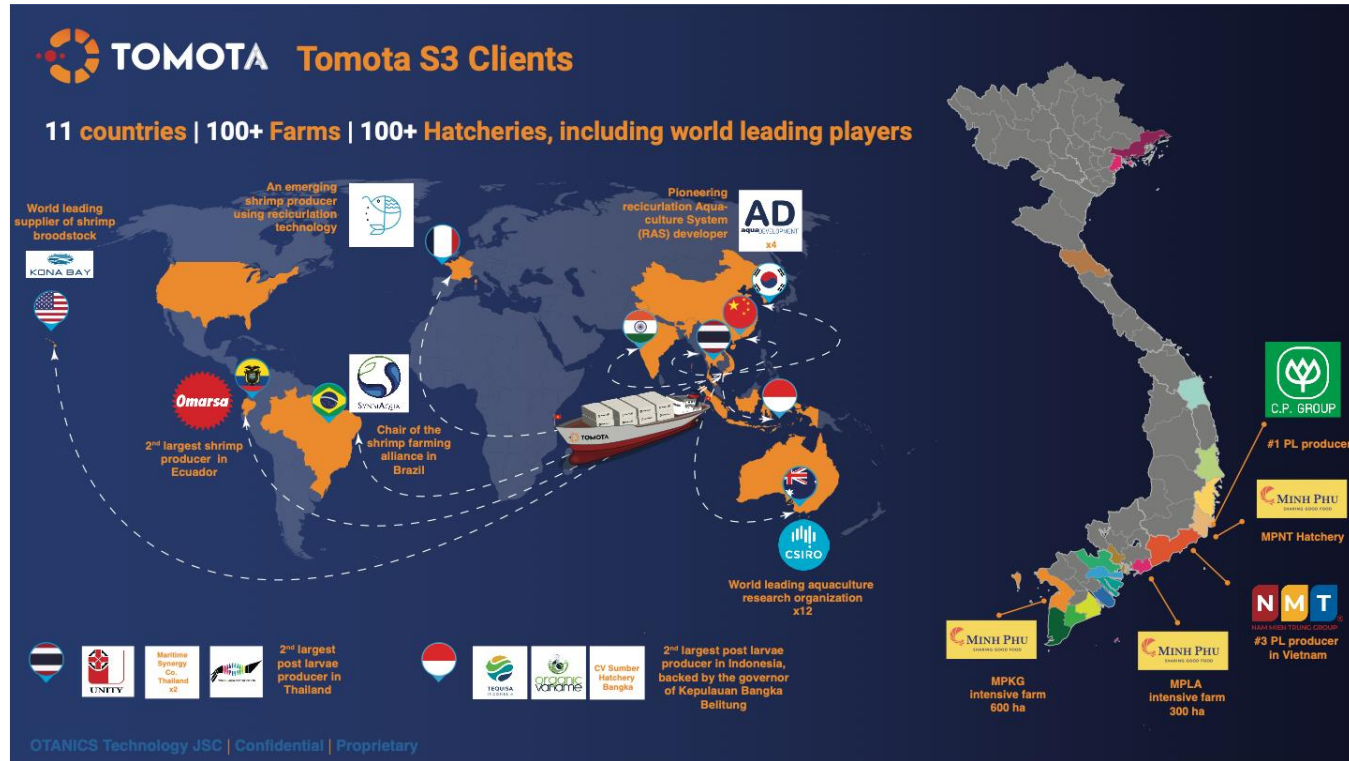
- New Way
- Tuấn Hà
- Trần Hậu Điền
- Nam Phú Hưng
- Nam Miền Trung
- Phương Hà
- Đông Thành
- Nam Thành Lợi
- Nam Trung Phát
- Other 50 hatcheries

Farm:

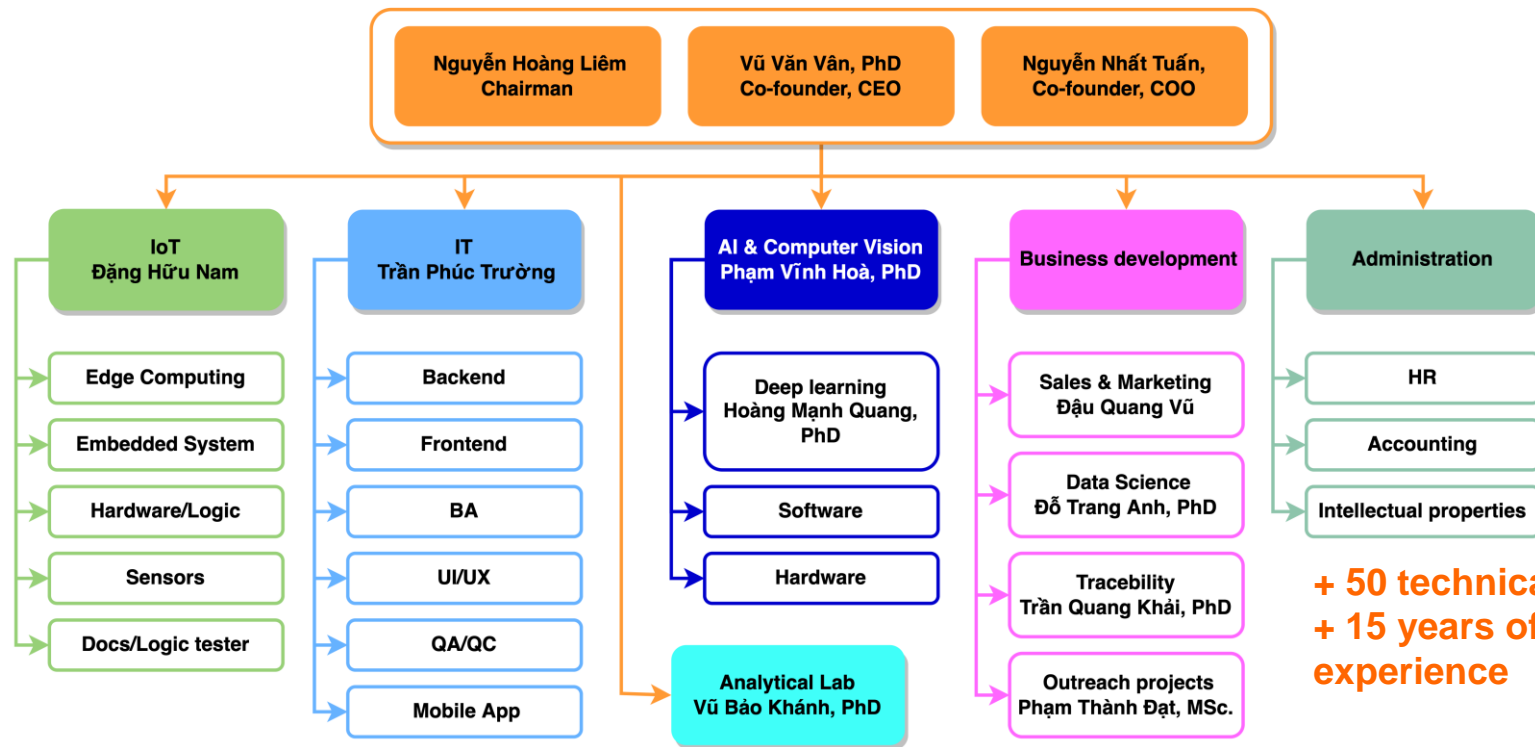
- Tuấn Hiền
- Duy Minh
- Vũ Đình Hà
- Ong Sái
- Toàn Vinh
- Tấn Tài
- Anh Hải
- O Farm
- other 50 farms



TOMOTA is thankful for our customer on the world



The TOMOTA team



+ 50 technical staff
+ 15 years of R&D
experience



THANK YOU!

Hotline/Zalo/Whatsapp/Viber: 0889 866682 (0889 TOMOTA)

Email: support@tomota.vn

Tuan Nguyen, Co-founder, COO

Zalo/Whatsapp: +84909423306

Email: tuan.nguyen@tomota.vn



Website: <https://tomota.vn/>



Facebook: <https://www.facebook.com/Tomotavn>

