



Skretting

RACEWAYS, BERCARIOS Y MATERNIDADES
SON TODOS LO MISMO?

Aedrian Ortiz Johnson

RACEWAYS, BERCARIOS Y MATERNIDADES SON TODOS LO MISMO?

Definiciones:

Raceway

- Tanque rectangular de flujo continuo usado para cultivar peces/camarones.

Bercario

- Tanque redondo usado para crecer juveniles de camarones

Maternidades

- Tanques redondos o cuadrados usados para crecer juveniles de camarones.



Bercario



Raceways

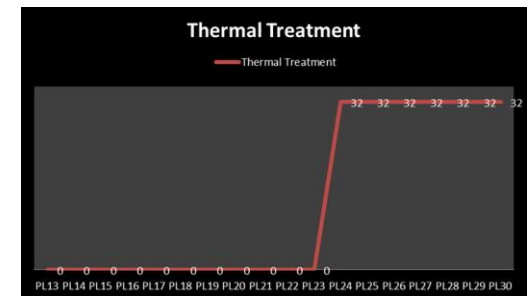
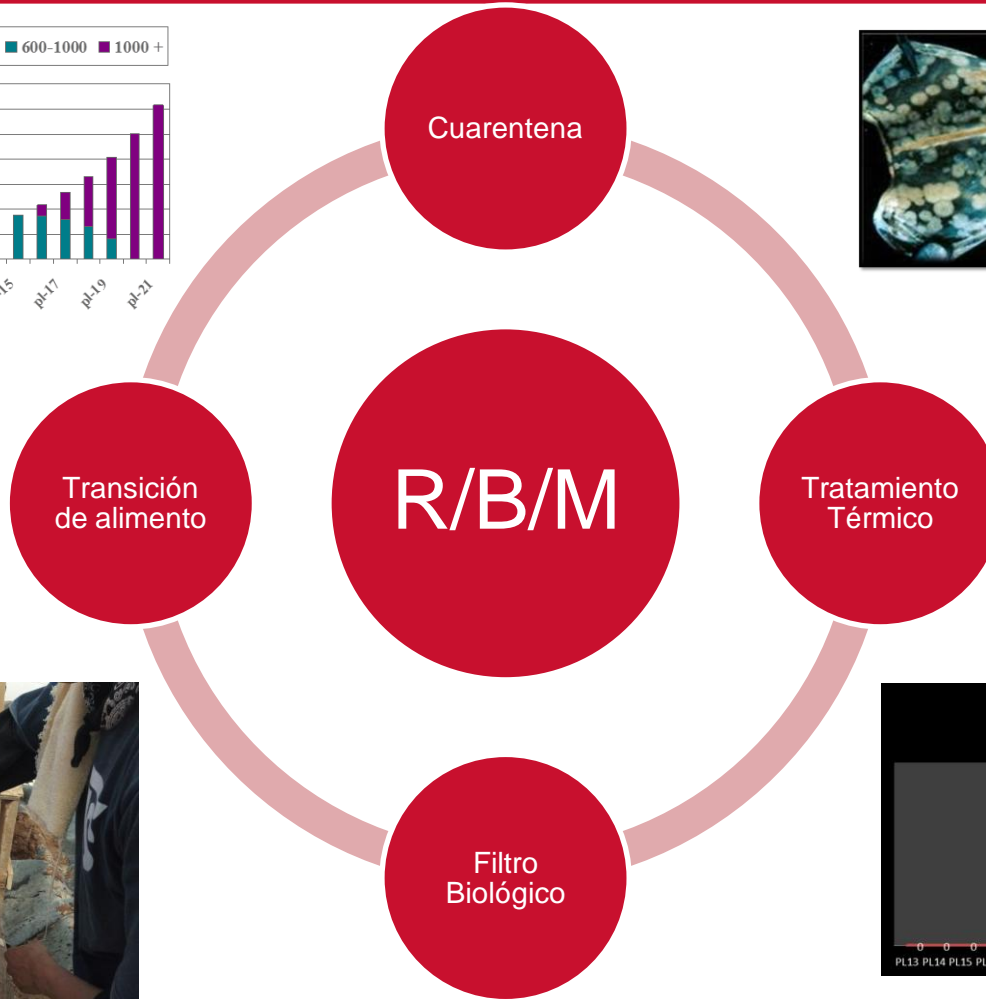
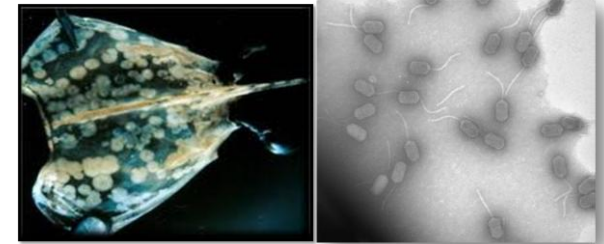
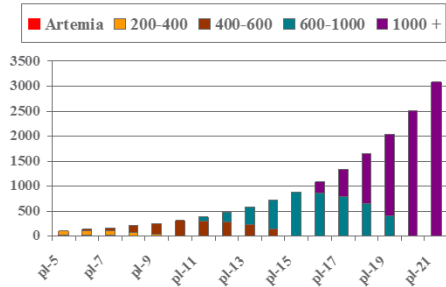


Maternidad



Maternidad

Para que sirven las Raceways/Bercarios/Maternidades?



Definición de Juvenil de Camarón:



3
gramos



250mg



10mg



GRANJA CAMARONERA		
SUPERFICIE A SEMBRAR	68	HECTAREAS
DENSIDAD A SEMBRAR	20	CAM/m ²
TOTAL DE PL A SEMBRAR	13,600,000	PLOSTLARVAS(PL)
PESO PROMEDIO	0.70	GRAMOS
SOBREVIVENCIA	80%	TEORICA
COMPRA DE POSTLARVAS	17,000,000	PL A FACTURAR
LABORATORIO ENTREGA	10%	DESCUENTO
TOTAL DE PL CON EXCEDENTE 10%	18,700,000	A MATERNIZAR

SOBREVIVENCIA TEORICA	PL A SEMB. GRANJA	CAM/m²
75%	14,025,000	20.6
80%	14,960,000	22.0
85%	15,895,000	23.4
90%	16,830,000	24.8

PL/litro sembrada Volumen de los tanques Numero de Tanques necesarios		
3	80,000 litros	78
12	80,000 litros	20
17	80,000 litros	14

Estrategias de Cultivo:

Cosechas Parciales

- Sembrar 25 larvas por litro y hacer varias cosechas parciales.

Cosechas Totales

- Sembrar 25 larvas por litro y cosechar totalmente a una determinada talla.

CURVAS DE CRECIMIENTO

CURVAS ESTIMADAS DE CRECIMIENTO																			
MATERNIDAD		CRECIMIENTO EN RELACION A DENSIDAD DE SIEMBRA PL/L @ 30 GRADOS CELCIUS																	
DIAS	% SR	3	4	5	6	7	8	9	10	11	12	13	14	15	16	17	18	19	20
1	100	0.006									0.006					0.0066			
2	99	0.009									0.007					0.0073			
3	98	0.010									0.008					0.0081			
4	97	0.015									0.009					0.0088			
5	96	0.021									0.010					0.0095			
6	95	0.026									0.011					0.0097			
7	94	0.031									0.012					0.01			
8	93	0.037									0.016					0.0102			
9	92	0.042									0.019					0.0117			
10	91	0.054									0.023					0.0132			
11	90	0.066									0.026					0.0146			
12	89	0.078									0.030					0.0161			
13	88	0.090									0.033					0.02			
14	87	0.102									0.037					0.0215			
15	86	0.114									0.043					0.032			
16	85	0.126									0.049					0.0337			
17	84	0.156									0.055					0.0353			
18	83	0.186									0.061					0.037			
19	82	0.216									0.067					0.0475			
20	81	0.246									0.097					0.064			
21	80	0.276									0.127					0.069			
22	79	0.306									0.157					0.073			
23	78	0.336									0.187					0.089			
24	77	0.436									0.217					0.105			
25	76	0.536									0.247					0.121			
26	75	0.636									0.277					0.137			
27	74	0.736									0.307					0.153			
28	73	0.836									0.337					0.169			
29	72	0.936									0.367					0.185			
30	71	1.036									0.397					0.201			

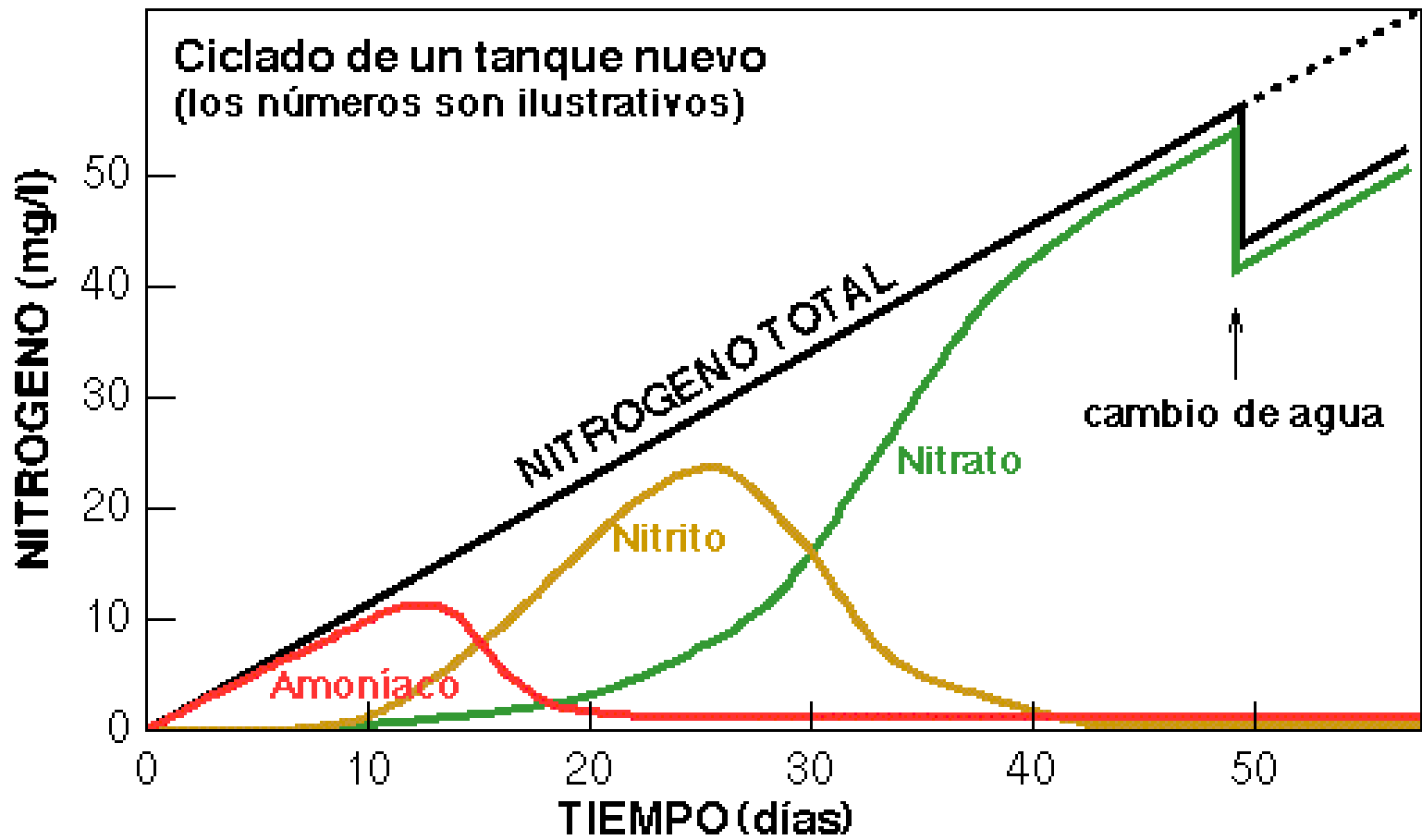
Vamos a los parámetros del agua:



Parámetros Fisicoquímicos del Agua que no podemos olvidar:

Checkar Parámetros

Parámetros	Rangos Óptimos
Temp	28-32
Sal	20-35
PH	7.5-8.5
DO	>5mg/l
Ammonia	<1mg/l
Nitrite	<0.5mg/l
Ca	>400 mg/l
Mg	>1,300mg/l
Alkalinity	150-200 mg/l
T.Bact. Count	<10exp3 CFU/ml
Vibrio Count	<10exp2 CFU/ml



Filtrado y Tratamiento del Agua:



Aireación:

No solo es O_2 también es circulación del agua y la materia orgánica



Aireación:

No solo es O₂ también es circulación del agua y la materia orgánica



Aireación
correcta

Resulta en
buenos
niveles de O₂



Pocos puntos
muertos/
Anoxicos

ALIMENTACION:



PROPOSTA DE DIETAS LABORATÓRIOS

Premissas:

Qtd
Estocada/Tan

Sobreviênci
a Estimada

PL/g
Peso inicial

Estocagem:	500.000	Sob.(%):	90.0%	PL/g	350
PESO FINAL PL/g	20.00	Dias	30		

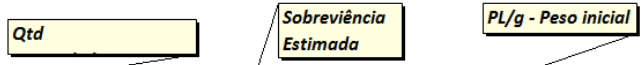
DIAS	PL/g	g	Biomassa Kg	Sob %	QUANT. PL's	PL# 2 kg/dia	PL# 3 kg/dia	PL# 4 kg/dia	SL#1 kg/dia	SL#2 kg/dia	TOTAL DIA	TOTAL ACUM	FCA ACUM
1	350.00	0.003	1	100%	500,000	0.19					0.2	0.2	0.13
2	263.16	0.004	2	99.7%	498,333	0.23					0.2	0.4	0.22
3	210.84	0.005	2	99.3%	496,667	0.27					0.3	0.7	0.29
4	162.41	0.006	3	99.0%	495,000	0.12	0.4				0.5	1.2	0.39
5	132.08	0.008	4	98.7%	493,333	0.08	0.5				0.6	1.7	0.47
6	111.29	0.009	4	98.3%	491,667		0.6				0.6	2.3	0.53
7	96.15	0.010	5	98.0%	490,000		0.7				0.7	3.0	0.59
8	84.64	0.012	6	97.7%	488,333		0.8				0.8	3.8	0.65
9	75.59	0.013	6	97.3%	486,667		0.8				0.8	4.6	0.71
10	66.16	0.015	7	97.0%	485,000		0.8				0.8	5.4	0.74
11	58.82	0.017	8	96.7%	483,333		0.9				0.9	6.4	0.78
12	52.95	0.019	9	96.3%	481,667		1.0				1.0	7.3	0.81
13	48.14	0.021	10	96.0%	480,000		0.6	0.3			1.0	8.3	0.84
14	44.14	0.023	11	95.7%	478,333		0.4	0.6			1.0	9.4	0.86
15	40.75	0.025	12	95.3%	476,667		0.3	0.9			1.2	10.6	0.90
16	38.29	0.026	12	95.0%	475,000		0.2	0.9			1.2	11.7	0.95
17	36.12	0.028	13	94.7%	473,333			1.2			1.2	13.0	0.99
18	34.18	0.029	14	94.3%	471,667			1.3			1.3	14.3	1.03
19	32.44	0.031	14	94.0%	470,000			1.2			1.2	15.5	1.07
20	30.86	0.032	15	93.7%	468,333			1.3			1.3	16.7	1.10
21	29.44	0.034	16	93.3%	466,667			1.6			1.6	18.3	1.16
22	28.14	0.036	15	93.0%	465,000			1.7			1.7	20.0	1.30
23	26.94	0.037	16	92.7%	463,333			1.8			1.8	21.8	1.37
24	25.85	0.039	16	92.3%	461,667			0.9	0.9		1.9	23.6	1.43
25	24.84	0.040	17	92.0%	460,000			0.6	1.1		1.7	25.3	1.48
26	23.91	0.042	18	91.7%	458,333			0.4	1.3		1.7	26.9	1.53
27	23.04	0.043	18	91.3%	456,667			0.3	1.4		1.7	28.7	1.58
28	22.24	0.045	19	91.0%	455,000			0.3	1.5		1.8	30.4	1.63
29	21.49	0.047	19	90.7%	453,333			0.4	1.5		1.9	32.3	1.69
30	20.78	0.048	20	90.3%	451,667			0.4	1.9		2.4	34.7	1.77
31	20.13	0.050	20	90.0%	450,000			0.3	2.1		2.4	37.1	1.84

Adriano Alvim Guarana
adriano.guarana@trouwnutrition.com



PROPOSTA DE DIETAS LABORATÓRIOS

Premissas:



Estocagem:	1,080,000	Sob.(%):	75%	PL/g	1
Peso Final (g)	3.00	Dias	20		

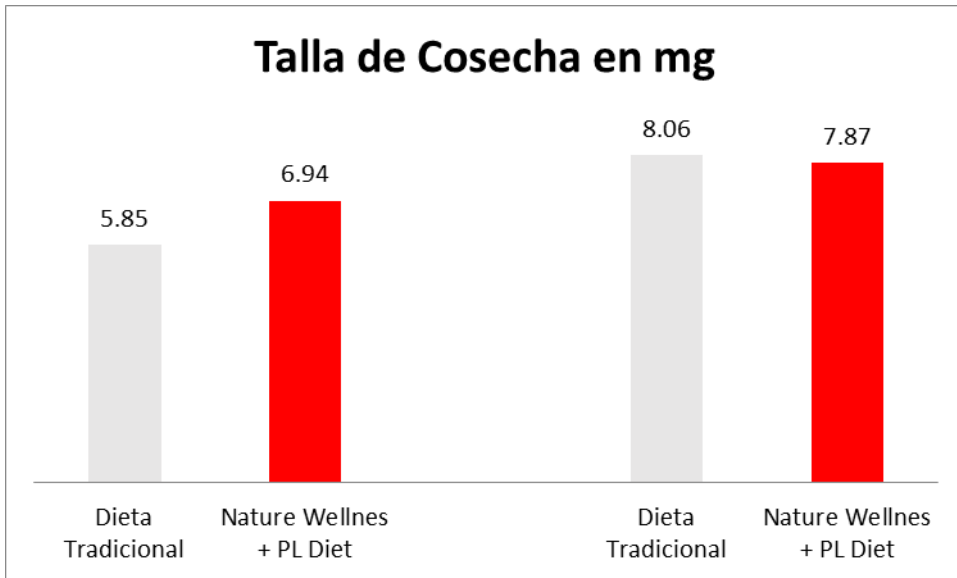
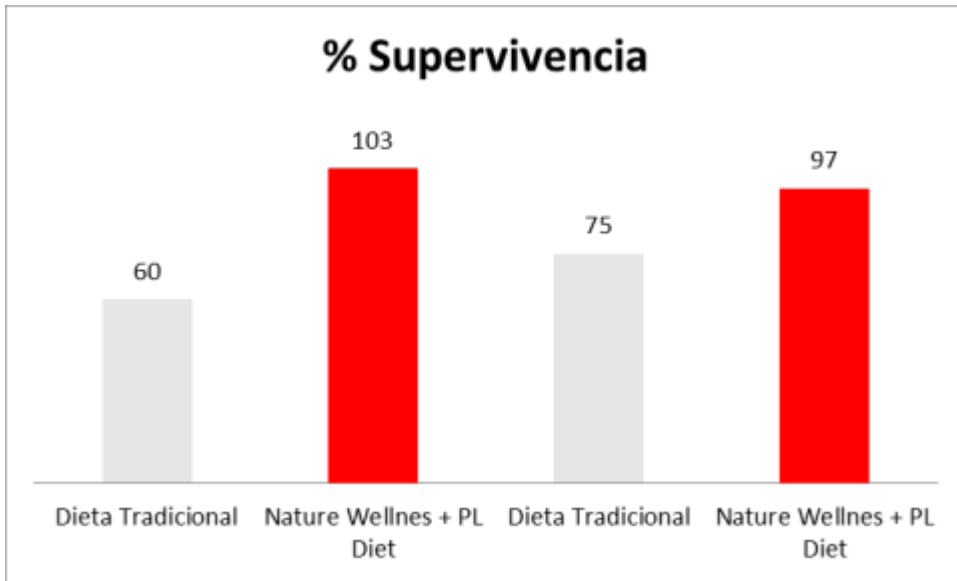
DIAS	PL/g	g	Biomassa Kg	Sob %	QUANT. PL's	PL# 2 kg/dia	PL# 3 kg/dia	PL# 4 kg/dia	SL#1 kg/dia	SL#2 kg/dia	SL 1.4 kg/dia	TOTAL DIA	TOTAL ACUM	FCA ACUM
1	1.00	1.000	1,080.0	100%	1,080,000		59.4					59.4	59.4	0.06
2	0.97	1.030	1,098.5	98.8%	1,066,500		27.5	27.5				54.9	114.3	0.10
3	0.94	1.060	1,116.2	97.5%	1,053,000		14.0	41.9				55.8	170.1	0.15
4	0.92	1.090	1,133.1	96.3%	1,039,500			56.7				56.7	226.8	0.20
5	0.89	1.120	1,149.1	95.0%	1,026,000			57.5				57.5	284.2	0.25
6	0.87	1.150	1,164.4	93.8%	1,012,500			58.2				58.2	342.5	0.29
7	0.80	1.250	1,248.8	92.5%	999,000			62.4				62.4	404.9	0.32
8	0.74	1.350	1,330.4	91.3%	985,500			66.5				66.5	471.4	0.35
9	0.69	1.450	1,409.4	90.0%	972,000			77.5				77.5	548.9	0.39
10	0.65	1.550	1,485.7	88.8%	958,500			43.5	30.1			73.5	622.5	0.42
11	0.61	1.650	1,559.3	87.5%	945,000			35.1	42.1			77.2	699.7	0.45
12	0.56	1.785	1,662.7	86.3%	931,500			18.7	59.9			78.6	778.2	0.47
13	0.52	1.920	1,762.6	85.0%	918,000			19.8	59.5			79.3	857.5	0.49
14	0.49	2.055	1,858.7	83.8%	904,500			11.2	63.2			74.3	931.9	0.50
15	0.46	2.190	1,951.3	82.5%	891,000			11.7	50.7	15.6		78.1	1,009.9	0.52
16	0.43	2.325	2,040.2	81.3%	877,500				20.4	61.2		81.6	1,091.5	0.54
17	0.41	2.460	2,125.4	80.0%	864,000				21.3	63.8		85.0	1,176.6	0.55
18	0.39	2.595	2,207.0	78.8%	850,500				8.8	79.5		88.3	1,264.8	0.57
19	0.37	2.730	2,285.0	77.5%	837,000					32.0	59.4	91.4	1,356.2	0.59
20	0.35	2.865	2,359.3	76.3%	823,500					33.0	61.3	94.4	1,450.6	0.61
21	0.33	3.000	2,430.0	75.0%	810,000					12.8	72.3	85.1	1,535.7	0.63

Adriano Alvim Guarana
 adriano.guarana@trouwnutrition.com



Raceways:	Camaronera Argasa	Camaronera Argasa
Ubicación:	Balao	Balao
Origen Larva:	JR Texcumar	JR Texcumar
Capacidad Raceway:	80 TON	80 TON
Larva Sembrada:	1,102,000	1,102,000
Talla de siembra:	2.5	2.5
Alimentación:	PROGRAMA DE ALTO PERFIL NUTRICIONAL	PROGRAMA TRADICIONAL
Días de Cultivo:	10	10
Larva Cosechada:	1,066,800	830,056
Talla de Cosecha:	7.87mg	8.06mg
% Supervivencia:	96	75
Costo/ Millon de Larva Cosechada:	71.86	100.49

Raceways:	Camaronera Argasa	Camaronera Argasa
Ubicación:	Balao	Balao
Origen Larva:	JR (Constamar)	JR (Constamar)
Capacidad Raceway:	80 TON	80 TON
Larva Sembrada:	1,192,000	1,192,000
Talla de siembra:	2.38mg	2.38mg
Alimentacion:	PROGRAMA DE ALTO PERFIL NUTRICIONAL	PROGRAMA TRADICIONAL
Dias de Cultivo:	10	10
Larva Cosechada:	1,230,000	717,345
Talla de Cosecha:	6.9mg	5.8mg
% Supervivencia:	100	60
Costo/ Millón de Larva Cosechada:	62.325	116.28



BIOSECURITY



PEOPLE MOVEMENT AND BEHAVIOUR

- Staff
- Visitors



WATER INTAKE



SUPPLIES

- Fresh/frozen feed sources
- Other supplies



SITE LOCATION



INTRODUCTION OF GENES

Broodstock



DISPATCH AND LOADING PROCEDURES



A QUARANTINE AREA IS RECOMMENDED, where the animals are held and analysed before entering the production area.



CARRIERS

- Wild and domestic animals
- Pests



COSECHANDO Y TRASNFIRIENDO A LOS ESTANQUES DE ENGORDA:

















Scout-Pro

400g

112.9 g

ON/ZERO
Off

PRINT
Unit























MUITO OBRIGADO!

Our mission

*feeding
the future*

Our vision

In a world with limited natural resources and a growing population, there is a rising demand for high quality meat, fish and shrimp. We will be the global leader in providing innovative and sustainable nutritional solutions that best support the performance of animals, fish and shrimp.

Our values

